

Imagine.

 Roland®

VersaArt
RE-640



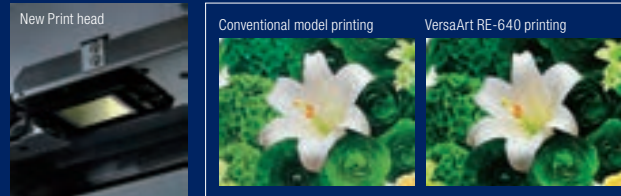
Discover - *the beauty of high speed printing*
Superior performance, excellent value

Discover the beauty of high speed printing

Express your artistic vision beautifully with the superior imaging of our newest print head technology. Achieve faster print speeds and impressive colour reproduction for premium graphics on demand. Affordable, yet advanced, the VersaArt RE-640 places high-fidelity print quality within your reach.

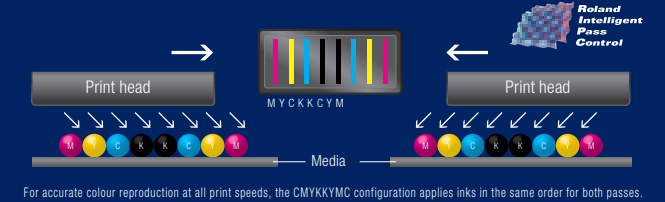
Reproduce every detail using Roland's latest print head technology

For flawless print quality, the RE-640 is equipped with the latest print head technology, featuring variable droplet control. Its unique design produces droplets of seven different sizes to accentuate all of the fine details in your image. The result is high-density printing with vibrant colours, flawless photographic reproduction, smooth gradations and superb contrast.



High productivity and exceptional print quality

With the RE-640, you get all the benefits of our eight-channel mirrored ink configuration, which eliminates the colour unevenness that can occur during bi-directional printing. This configuration (CMYKKYMC) delivers unmatched colour consistency, even in the fastest modes—13.1 m²/h for vinyl and 23.1 m²/h for banners. Roland Intelligent Pass Control[®] further enhances image quality by precisely controlling dot placement between passes for images that are virtually free of banding.



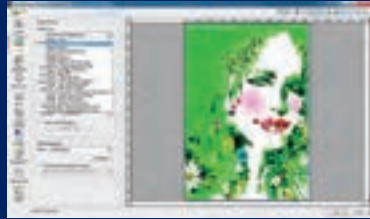
VersaArt
RE-640

Discover - *the beauty of high speed printing*
Superior performance, excellent value

Automatically customises your media settings

The RE-640 comes complete with VersaWorks®, our own powerful, yet easy-to-use RIP and print management software. Simply select your target media from a list of media profiles and VersaWorks automatically adjusts the colour, amount of ink and other critical factors, resulting in vibrant colours, smooth gradations and exceptional image quality.

Best of all, VersaWorks' intuitive interface is easy to master, even with no previous experience.



RIP & PRINT MANAGEMENT SOFTWARE
Roland VersaWorks®

Easy and affordable to operate

The VersaArt is engineered for easy maintenance and low running costs. In the RE-640, ink jetting is carefully controlled to ensure the highest print quality while keeping running costs down. An automated cleaning function preserves the print head while minimising ink consumption. VersaArt is highly energy efficient, both during production and in standby mode.



Amount of ECO-SOL MAX Ink used

Media	Ink Consumption
Banner	5.77cc
Vinyl	4.71cc

Print description: Data size is 1118 x 894.4 mm (44.02" x 35.21"). Printed with an RE-640 in standard mode using Roland VersaWorks® RIP software.

Unmatched service and support

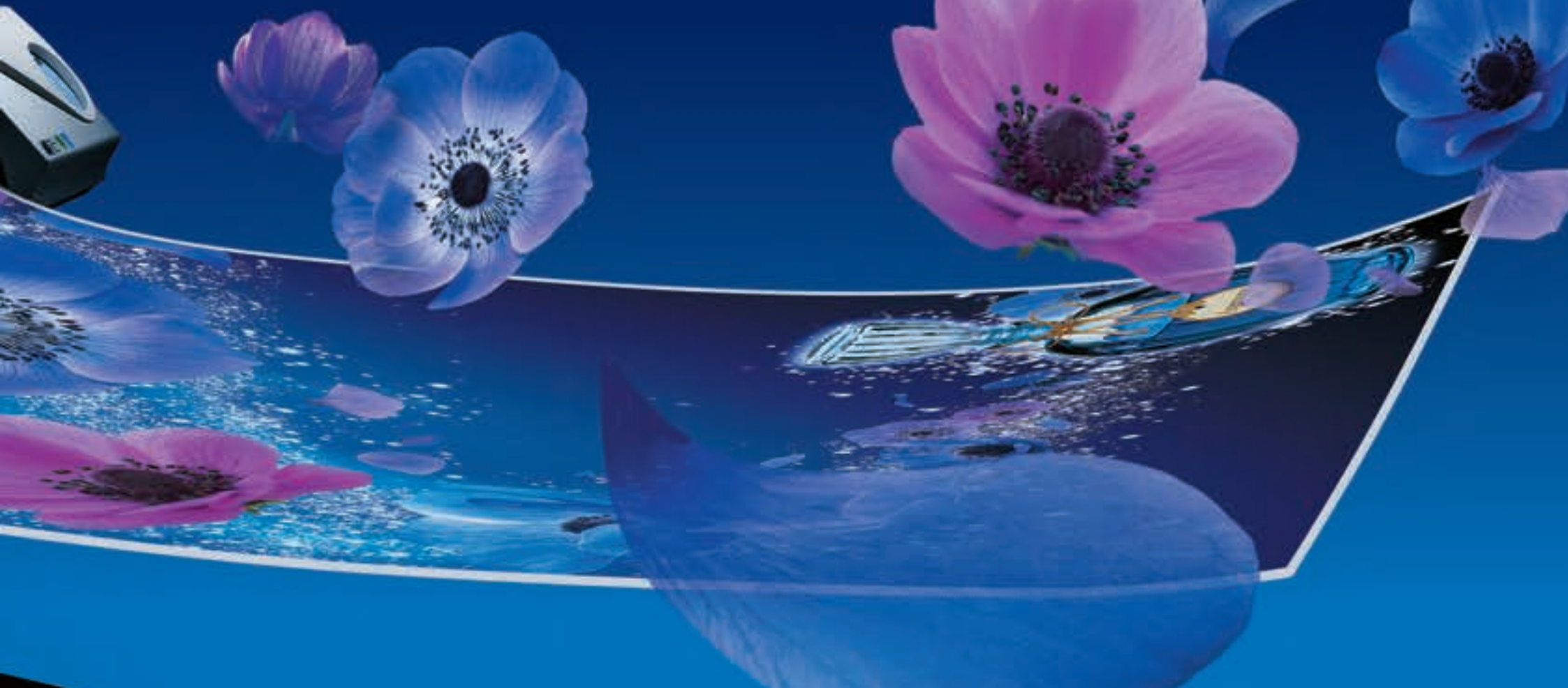
Roland DG Creative Centre : Our own collection of real-world applications is a great source of information and inspiration. Explore our digital printing gallery for new ideas you can apply to your own business.



Roland DG Academy : To get the most from your printer, take advantage of our extensive training resources worldwide. Roland Academy teaches everything from printer basics to advanced production techniques, applications and more.



Roland DG Care : As a Roland owner, you get complete support for the life of your printer. A full range of customer services is offered.





VersaArt RE-640



RIP & PRINT MANAGEMENT SOFTWARE
Roland VersaWorks®



Specifications		
Printing Technology		Piezoelectric inkjet
Media	Width	259 to 1625 mm (10.2 to 64 in.)
	Thickness	Maximum 1.0 mm (39 mil) with liner, for printing
	Roll outer diameter	Maximum 210 mm (8.3 in.)
	Roll weight	Maximum 40 kg (88 lb.)
	Core diameter*1	76.2 mm (3 in.) or 50.8 mm (2 in.)
Printing width*2		Maximum 1615 mm (63.6 in.)
Ink cartridges	Types	Roland ECO-SOL MAX 220-cc cartridge / 440-cc cartridge
	Colours	Four colours (cyan, magenta, yellow, and black)
Printing resolution (dpi)		Maximum 1440 dpi
Distance accuracy*3		Error of less than ±0.3% of distance traveled, or ±0.3 mm, whichever is greater
Media heating system*4		Print heater, setting range for the preset temperature: 30 to 45°C (86 to 112°F) Dryer, setting range for the preset temperature: 30 to 50°C (86 to 122°F)
Connectivity		Ethernet (10BASE-T/100BASE-TX, automatic switching)
Power-saving function		Automatic sleep feature
Power requirements		AC 100 to 120 V ±10 %, 8.2 A, 50 / 60 Hz or AC 220 to 240 V ±10 %, 4.2 A, 50 / 60 Hz
Power consumption	During operation	Approx. 1080 W
	Sleep mode	Approx. 14.8 W
Acoustic noise level	During operation	64 dB (A) or less
	During standby	41 dB (A) or less
Dimensions (with stand)		2,575 (W) x 705 (D) x 1,175 (H) mm (101.4 (W) x 27.8 (D) x 46.3 (H) in.)
Weight (with stand)		135 kg (298 lb.)
Environmental	Power on	Temperature: 15 to 32°C (59 to 90°F) (20°C [68°F] or more recommended), humidity: 35 to 80%RH (non-condensing)
	Power off	Temperature: 5 to 40°C (41 to 104°F), humidity: 20 to 80%RH (non-condensing)
Included items		Exclusive stands, power cord, media clamps, media holder, replacement blade for separating knife, software RIP, User's Manual, etc.

Ink		
Model	Description	
ECO-SOL MAX Ink	ESL3-4CY	Cyan, 440cc
	ESL3-4MG	Magenta, 440cc
	ESL3-4YE	Yellow, 440cc
	ESL3-4BK	Black, 440cc
	ESL3-CY	Cyan, 220cc
	ESL3-MG	Magenta, 220cc
	ESL3-YE	Yellow, 220cc
	ESL3-BK	Black, 220cc
Cleaning liquid	SL-CL	1 pc.

GX-640 Cutter



Pair your VersaArt RE-640 with a Roland CAMM-1 Pro GX-640 vinyl cutter for the ultimate print and then cut option.

Roland VersaWorks System Requirements	
Operating system	Windows® 7 Professional or Ultimate (32/64-bit); Windows Vista® Business/Ultimate (32/64-bit); Windows® XP Professional Service Pack 2 or later (32/64-bit)
CPU	Core™2 Duo, 2.0 GHz or faster recommended
RAM	2 GB or more recommended
Video card and monitor	A resolution of 1,280 x 1,024 or more recommended
Free hard-disk space	40 GB or more recommended
Hard-disk file system	NTFS format
Optical drive	DVD-ROM drive

*Roland VersaWorks® is a 32-bit application, which runs on 64-bit Windows® with WoW64 (Windows 32-bit on Windows 64-bit).

Optional media take-up system: TU2-64



Offered as an optional upgrade, the RE-640's heavy-duty take-up system supports media rolls weighing up to 30kg(66lbs.). This finely-tuned system winds your media flawlessly, preserving print quality through even the longest runs.

*1 The media holder of this machine is exclusive use for the media of paper tube (core) inner diameter 3 inches. To use 2 inches media, the optional media flanges are required. *2 The length of printing is subject to the limitations of the program. *3 Using Roland specified media, print travel of 1m, temperature: 25°C (77°F), humidity: 50%RH, not assured when the print heater or dryer is used. *4 Warm-up is required after power up. This may require 5 to 20 minutes, depending on the operating environment. The preset temperature may fail to be reached depending on the ambient temperature and media width.

Roland DG products that feature this environmental label meet the company's criteria for environmental consciousness, a set of standards based on ISO 14021 self-declaration type II. For more information, please visit www.rolanddg.com.



Roland reserves the right to make changes in specifications, materials or accessories without notice. Your actual output may vary. For optimum output quality, periodic maintenance to critical components may be required. Please contact your Roland dealer for details. No guarantee or warranty is implied other than expressly stated. Roland shall not be liable for any incidental or consequential damages, whether foreseeable or not, caused by defects in such products.

Adobe, PostScript, PostScript 3 and the PostScript logo are trademarks of Adobe Systems Incorporated. All other trademarks are the property of their respective owners. Roland DG Corp. has licensed the MMP technology from the TPL Group.



AUTHORISED DEALER: